

Barco portacontenedores

Tipo post-panamax

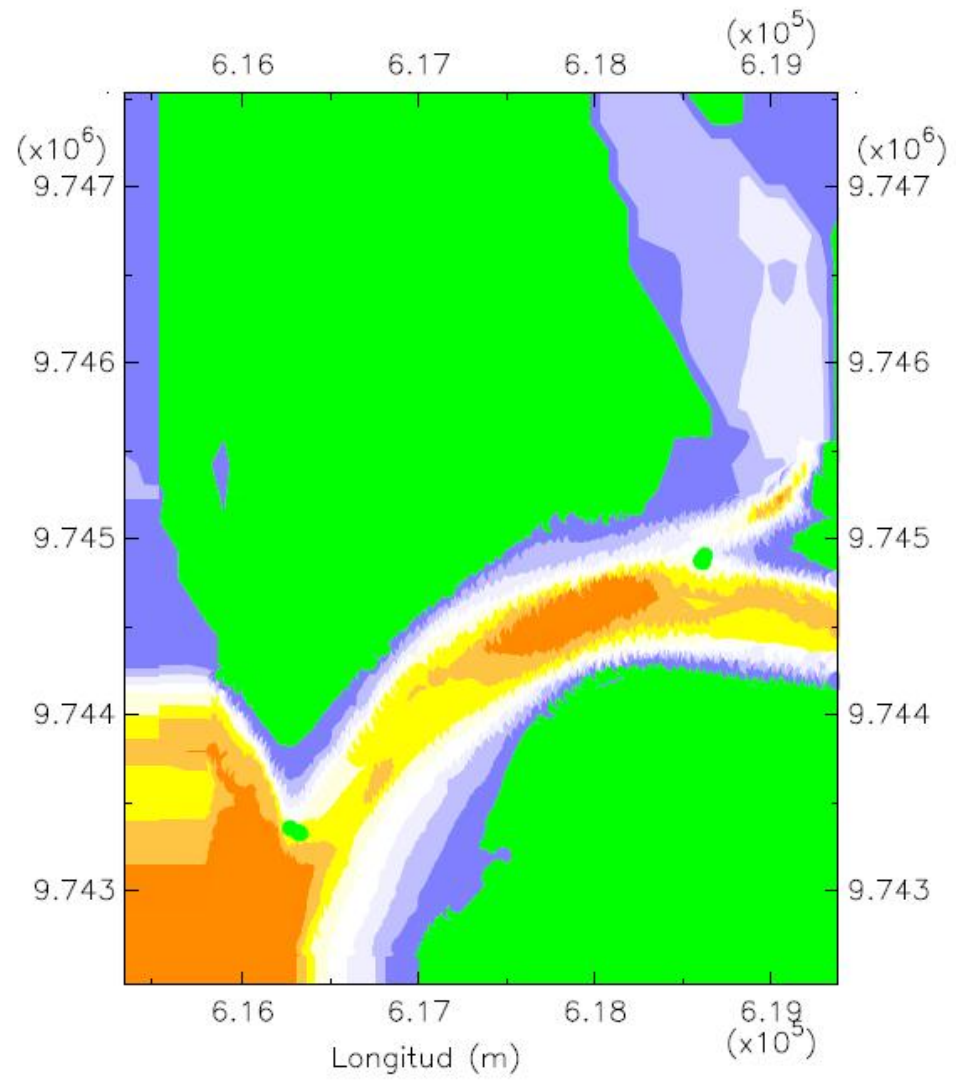
Eslora: 318.20 m

Manga: 42.800 m

Calado: 11.60 m

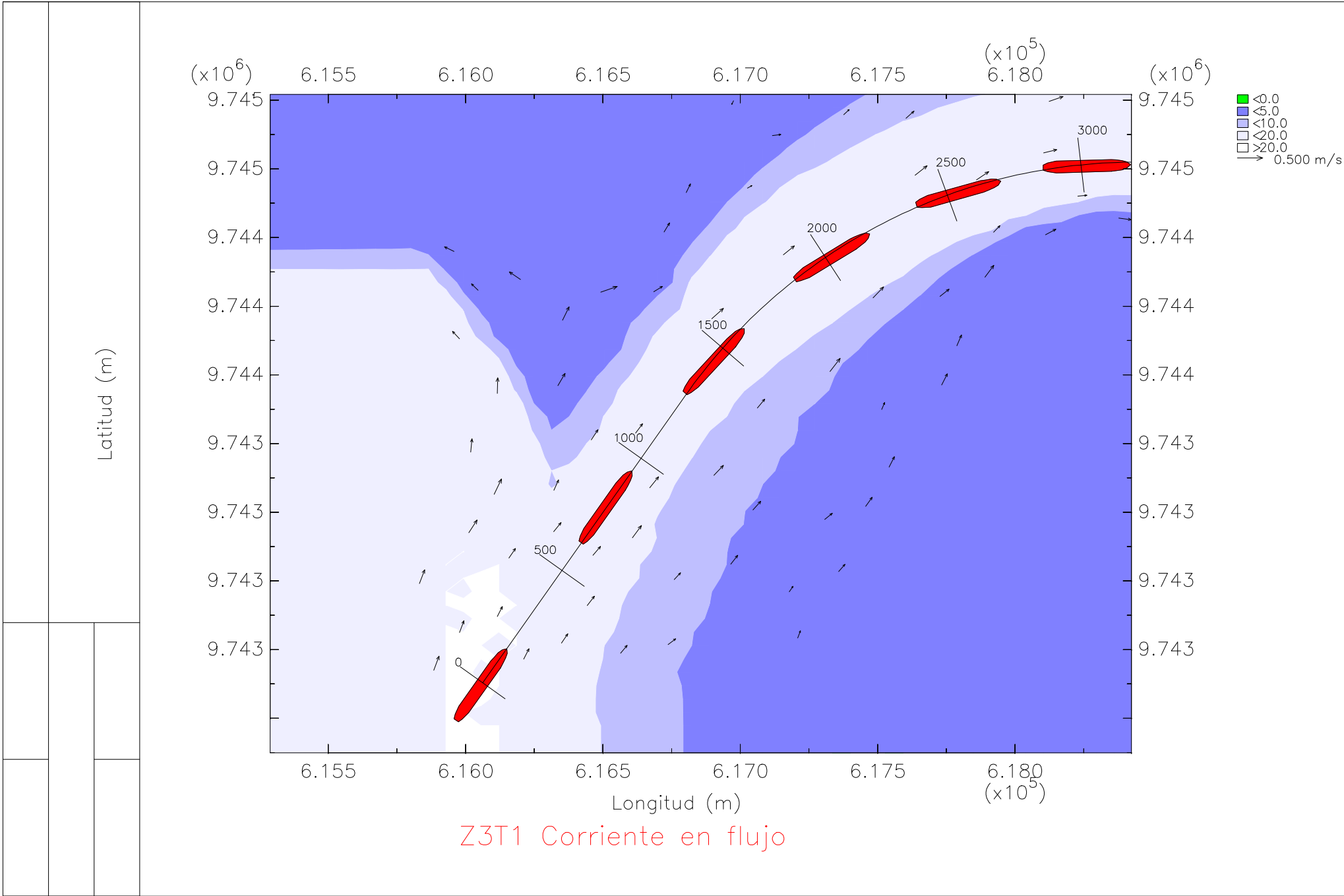
En la zona 3, tramo 1

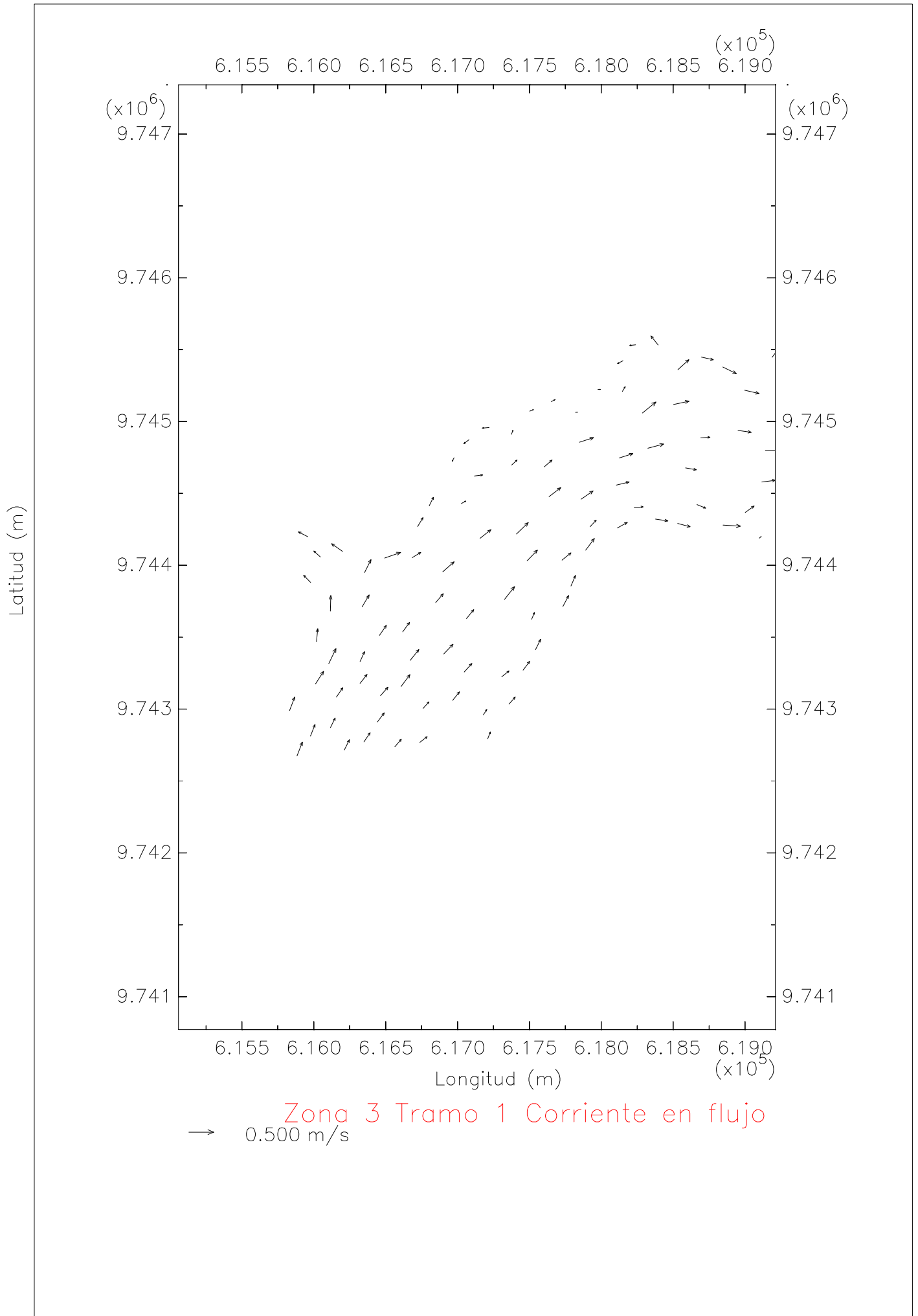
Bajo condiciones de llenante

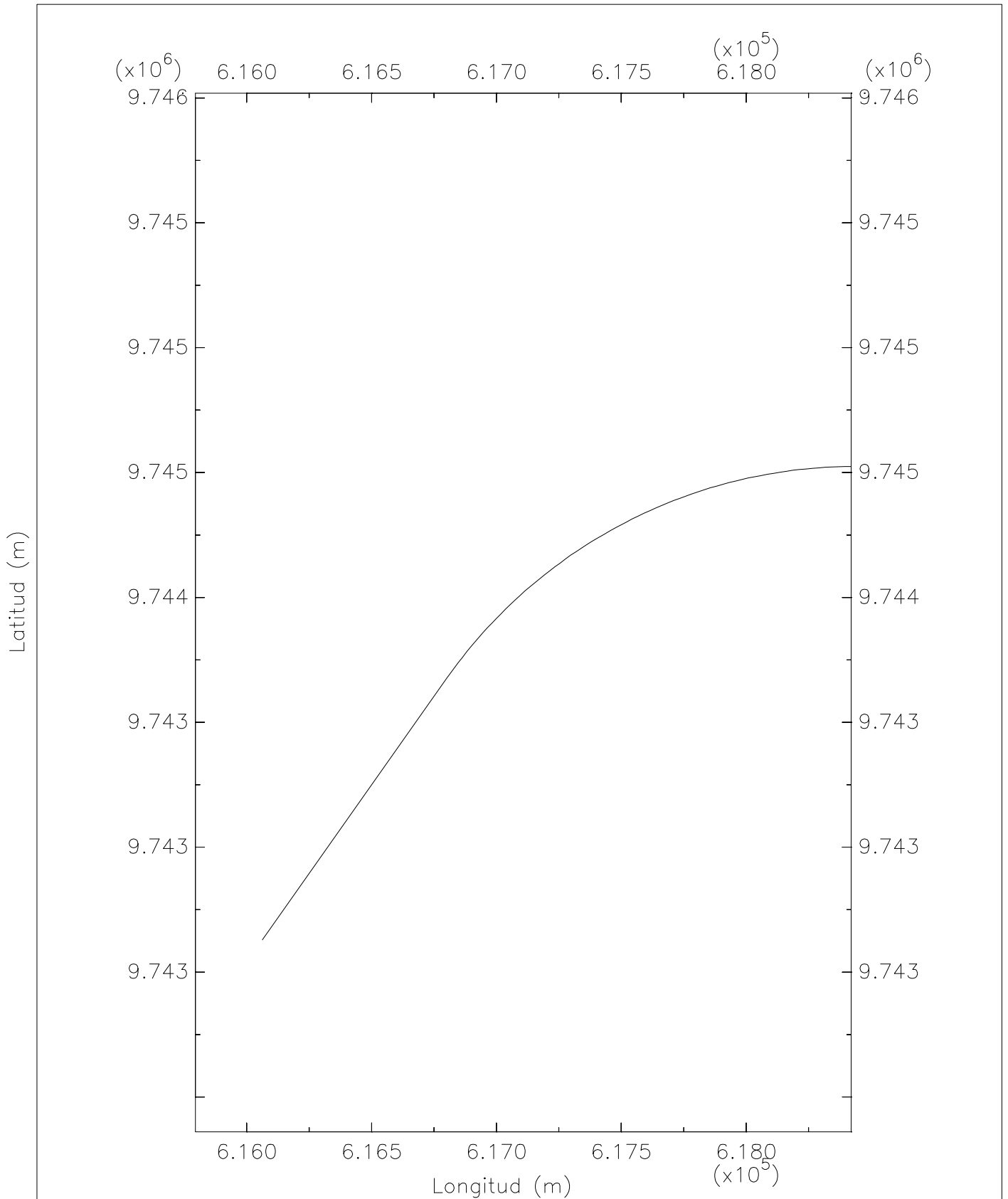


Zona 3 Tramo 1 Profundidad

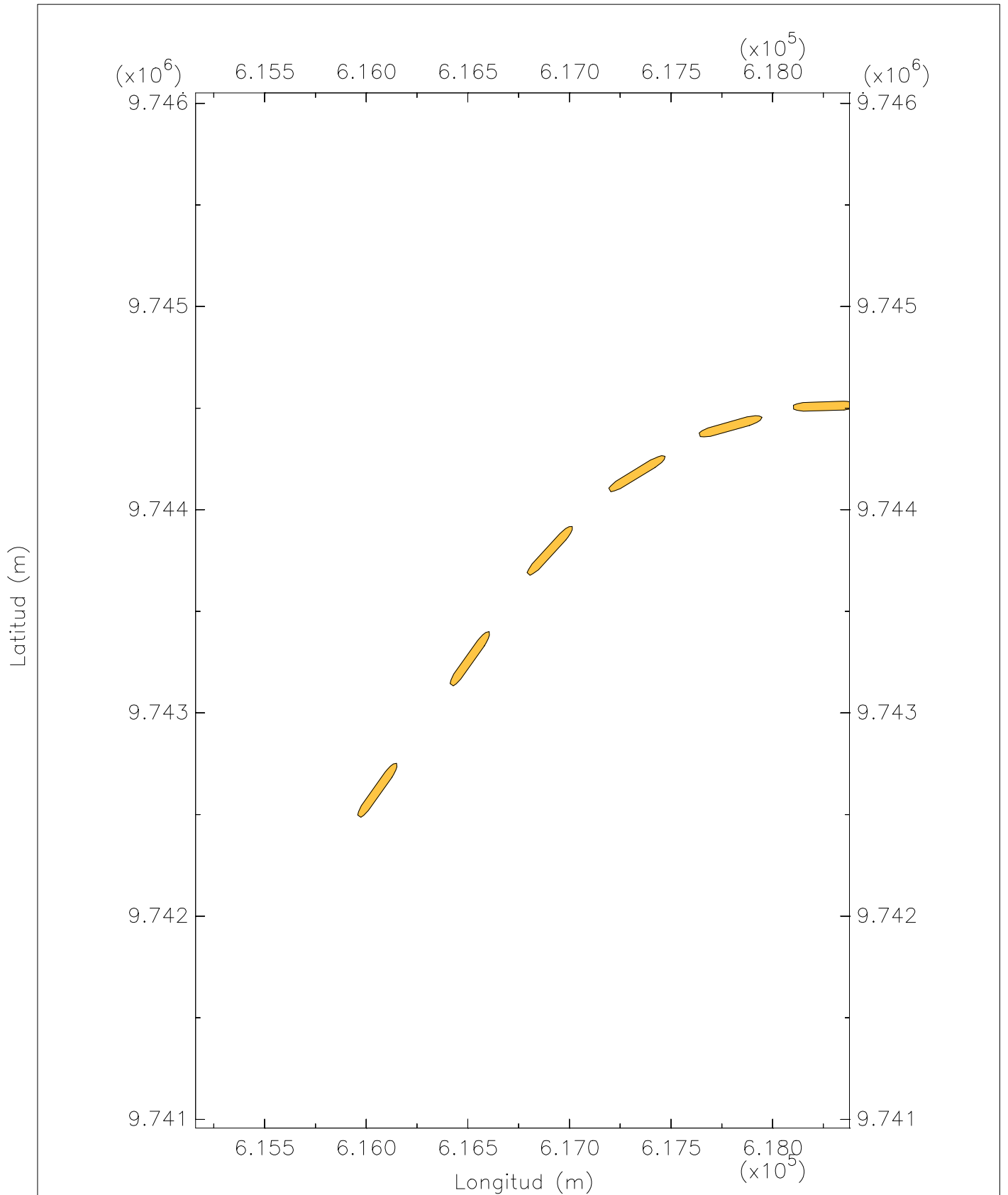




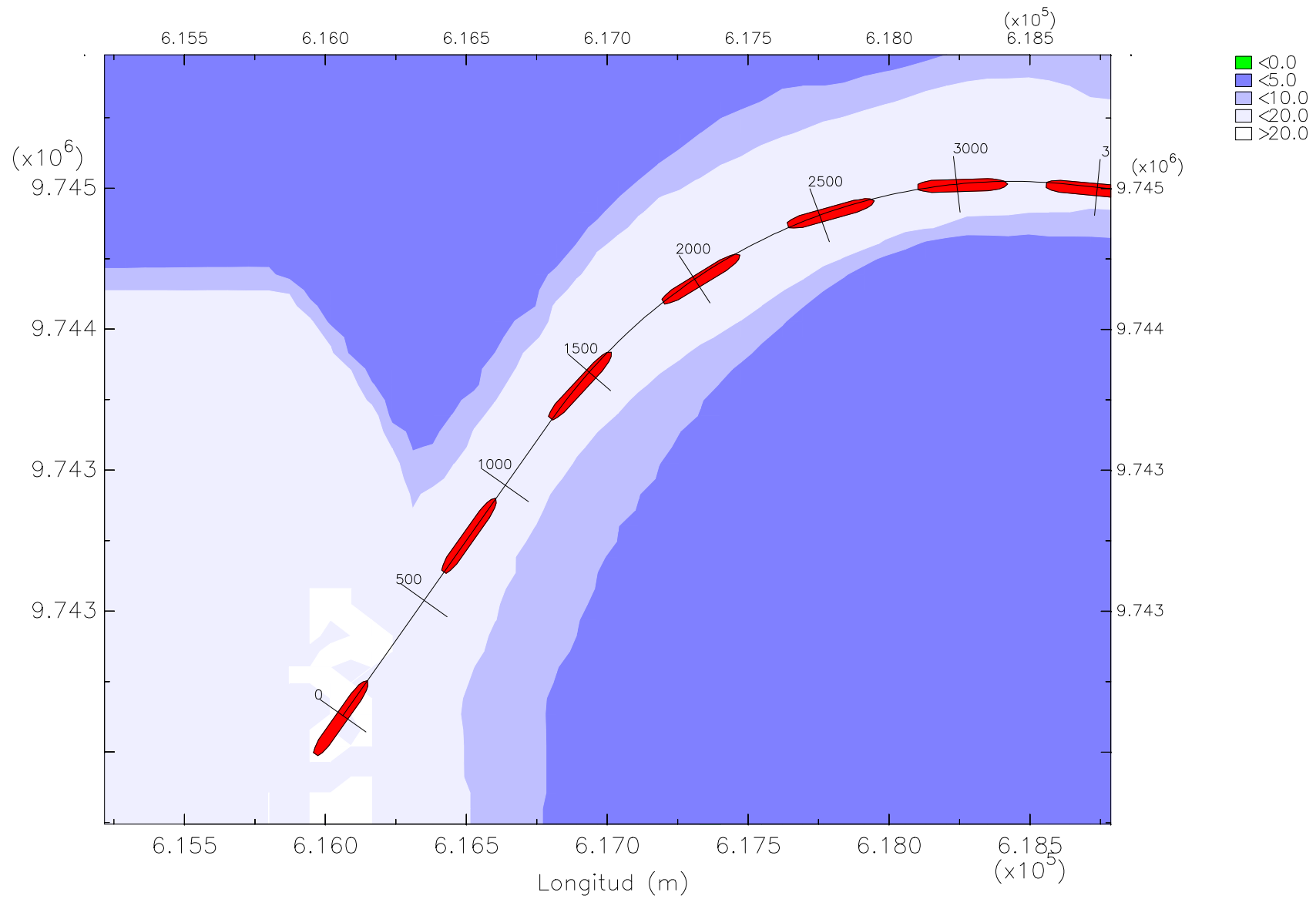




Zona 3 Tramo 1 Eje del canal



Z3T1 Trayectoria del barco portacontenedores post-panamax



Z3T1 Trayectoria del barco portacontenedores en flujo